

# **2004 GUIDE FOR COMMUNITY IMPROVEMENT**

**Study conducted by the LEAD Class of 2004**

**The Greater Effingham Chamber of Commerce & Industry**

The Greater Effingham Chamber of Commerce & Industry released the first Effingham County Guide for Community Improvement in 2002 in an effort to define and measure the “Quality of Life” for Effingham County. This document, which is now an annual report, is a fact-based statistical assessment of the economic, environmental and social well being of Effingham County.

The Chamber is committed to community progress. The Chamber’s mission is to provide leadership that will help create the best place in which to operate a business while enhancing the county as a desirable place in which to live, work and visit. This report will serve as a consolidated, comprehensive reference guide for the community to address improvement opportunities. A narrative for each community indicator will define why the indicator is important to the community and measures community progress.

The report will be a compilation of 60 indicators that are grouped into six categories. The indicators measure the livability of Effingham County and present an overall picture of where Effingham County is succeeding and performing well, and where there are needs or gaps (red flags) that should be addressed now to avoid future problems

The Guide is an unbiased, bipartisan view of how Effingham County is doing. It is the Chamber’s hope that the report is studied and utilized as a tool for government, business and community leaders in their decision making processes that will affect the “Quality of Life” for the county’s residents. The 2003 report would not be possible without the sponsorship of the Chamber and the members of the 2003 Leadership Enhancement and Development Program. In addition, many thanks to all who provided feedback on the report so we could provide a picture of the county’s overall well-being. Future reports will continue to track the key issues identified in the 2003 report, and include new indicators for emerging issues of interest in Effingham County.

The Guide and data gathered by the leadership class is available on the chamber’s website:  
[www.effinghamchamber.org](http://www.effinghamchamber.org).

## REPORT PARAMETERS

This report is a Chamber directed review of community “Quality of Life”. It is to be used by the Chamber in defining its role and its partnerships within the community in effecting change and improvement. The Chamber will share this information broadly with other organizations that have similar goals of affecting positive change.

The Guide covers Effingham and Effingham County and will evolve as we become more practiced at finding the indicators that best reflect Effingham County. The Chamber and its partners are launching what will hopefully broaden into an ongoing, and innovative process of community self-evaluation.

Indicators are framed to reflect issues of relatively broad application to the public. The inclusion of great number of indicators focused on small groups within the population could easily skew measurements intended to measure the livability of the community in broad terms. Further, only those indicators that are capable of being quantified and then impacted by community action are included.

Present indicators will be assessed and placed in categories needing “Immediate Attention” or “To Be Watched”. If an indicator had two or more consecutive years of negative movement or no movement at all which could be construed as negative, it was placed in an “Immediate Attention” category. If it had at least one-year negative movement, it was placed in a “To Be Watched” category.

Readers should use caution in drawing specific conclusions about indicator trends. This report is meant to encourage community debate and action with issues and programs. Each reader will define “Quality of Life” and data trends in his or her own terms as well as frame recommendations for improvement. This guide is an attempt to provide an inventory of significant community issues with the implicit understanding that all components of a community can and do affect others.

The Chamber is committed to producing an annual Guide for Community Improvement. Each year, categories and indicators will be reviewed to reflect new research data and to compare findings with data from previous year(s). The Chamber will also guide the results of any recommendations or focuses to the appropriate agencies. As in any growing community, it will be useful to retain an openness to new issues and indicators as they are defined.

# OVERVIEW OF EFFINGHAM COUNTY

Effingham County is one of 102 counties in Illinois. It is located in the central southeastern part of the state and has excellent connections to the major metropolitan areas of America. The county ranks 46th in population at 34,264 and its land area covers 475 square miles.

Effingham County is steeped in the transportation tradition from humble beginnings of a way stop on the National-Cumberland Trail Road (America's first highway) to the establishment of north and south-east and west rail service in the 1860s to the creation of the Interstate Highway System, which was initiated in the 1960s.

Effingham County is located at an important juncture—the intersection of I-57 (direct route from Chicago to the Gulf of Mexico) and I-70 (direct route from east and west coasts.) They have become a vital hub for America's motoring public. Newly constructed overpasses have eliminated traffic problems in and around the Effingham area. On an average, over 36,000 vehicles pass through Effingham County daily. The strategic location, transportation system and the recently created Effingham Shortline Railroad are all key factors that have prompted expansions of new companies to this area.

Today, the Effingham region's economy is diverse and plays a vital role in the economy of central Illinois. The area has benefited from low unemployment, consistent job growth, substantial outside investment and expansion, and a broadening of the labor force. It is not reliant on any one area of activity and has generated new jobs for Effingham area residents with the continuous growth in major truck stops and terminals, restaurants, hotels, manufacturing plants, continuing education, and regional health care facilities.

Towns located in Effingham County operate under a commission form of government. The Mayor (official head of the City) and four City Council members are elected at-large for four-year staggered terms in non-partisan elections.

Effingham Illinois, the "*Crossroads of Opportunity*" was selected number 7 of 100 U.S. small towns for corporate facilities (2002). Effingham is located 200 miles south of Chicago and 100 miles east of St. Louis Missouri. It is the county seat of Effingham County and is strategically located at the intersection of Interstate 57 N/S and 70 E/W and is the crossroads of Illinois Highways 32, 33, 37 and U.S. Highways 40 and 45. The population is 12,400 and the city's corporate area is 7.0 square miles.

The City of Effingham is a non-home rule unit. The Mayor, with the City Council's consent, is responsible for appointing members to the various boards, commissions and committees of the City.

Many outdoor activities are within minutes of the city center—hunting, fishing, golfing, boating and camping. Annual community festivities include; Effingham Transportation Celebration, County Fair, Schuetzenfest, Corvette Funfest, Deutschfest and the Illinois High School Rodeo State Finals. In 2003, Effingham celebrated its 150th year with a three day Sesquicentennial Celebration.

Effingham combines the conveniences, usually found only in much larger cities, with the tranquility of a residential community. Pleasant neighborhoods, excellent school systems, fine stores and shops, advanced health care facilities, strong spiritual leadership, a wide range of recreation and relaxation opportunities, cooperative and concerned local units of government and strong local economy...they all add up to a community where people take advantage of all that life has to offer.

# EXECUTIVE SUMMARY

Effingham County, a great place to live, work and raise a family. Even with the amenities we enjoy, the residents and leadership should not become complacent. Always monitoring and measuring our community is smart and will give us a chance to observe trends, halt negative ones and improve on the positive ones. Change can work for us or against us, depending on how it is approached and what action is taken. This study is a tool to use in the measurement process; to determine where Effingham County needs improvement and change in order for it to continue to prosper and attract new residents, visitors and industry and sustain current industry and population.

The six significant livability community categories include: Arts and Recreation, Citizen Participation and Involvement, Community Wellness, Economic Environment, Education and Public Order and Safety.

Effingham County has made great strides in the areas of art and recreation. Outdoor art plays a major roll in the awareness and appreciation of art in Effingham. **Sculptures on the Avenues** is beginning it's sixth annual exhibit of by prominent and little-known Midwestern sculptors. The exhibit began with just nine pieces in 1999 and has grown to approximately 25 pieces. The permanent exhibit has grown as well, to include ten pieces and groupings. The ECCA works to bring a fresh approach to art for the public. The Effingham Art Guild does it's part in presenting art for public view, with five traveling exhibits hung in the lobby areas of the Medical Center, Bonutti Orthopedic, the Helen Matthes Library, City Hall, and Burkland's Green House. F.A.C.E. performs productions including musicals, comedies, and drama, with the occasional interactive piece for fun.

Effingham county history began with the construction of the National Road, and many historical sites remain. The Effingham County Courthouse is an important and easily recognizable monument and holds information that dates back to the 1870's. Other attractions include the Monastery Museum, which displays artifacts of the early residents and the Franciscan priests and brothers who founded the monastery. Ben Winter's Steam Engine Museum and the Dr. Charles Wright home are gems that capture the extremes of early life in Effingham County.

The availability of recreational facilities is also very important to the livability of a community. Effingham County is fortunate to have a variety of choices available for adults, children, and the entire family. The park district has playgrounds, athletic fields, an aquatic center, miniature golf, and picnic areas. The YMCA and local fitness centers provide excellent facilities to maintain a healthy and happy lifestyle. The growth of these facilities is evidence of our residents interest in health and fitness.

Citizens who are active in their community make their community a better place. Voting is a fundamental right and privilege of a free and democratic society. It is also our civic duty. Critical thinking and choice of public officials will ensure the continued growth and prosperity, not only of our community, but of our schools, our county and our country. It is also our duty to encourage our children, friends, and neighbors to enthusiastically exercise this right, privilege and duty. Vote. Every single one counts.

Volunteerism is a key to community relations and harmony. Whether we are giving time or material goods is irrelevant. The point is to give back. The United Way exceeded their goal of \$175,000 by over 15% because residents and businesses gave back. There are 78 social service organizations and 61 clubs and organizations in Effingham County offering services and assistance to fellow residents, and they all work, because people give back.

In order to continue to attract people to the area, the community must insure that all its residents will have the opportunity to live a healthy and productive life. This includes providing services to care for the population at all ages. When it comes to community wellness, two areas of concern are the teen birth and the infant mortality rates. The number of teen births seems to fluctuate from year to year. Although it was still below the

## EXECUTIVE SUMMARY CONT'D.

state average, there was a slight increase in 2002. The infant mortality rate was in a steady decline since 1999, but rose slightly in 2002. As a community, we need to continue to communicate with our teens, provide outreach and educational programs and promote prenatal care to address these very important issues.

Between 1990 and 2000, the population in Effingham County increased by more than 2,500. As the census will not be counted until 2010, there is no new census data to report. The number of social programs, including home health care, services for the elderly and disabled declined slightly due to a consolidation of duplicated services. The number of day care facilities has also increased, when taking into account the 65 home based facilities.

Effingham County has experienced solid economic growth in much of its recent history. As a transportation center in the Midwest, Effingham has benefited from double Interstate access, multiple highway intersections and double rail access. Effingham needs to continue to capitalize on this advantage and attract a fundamentally sound base of employers to keep the unemployment rate at a low level.

It is evident in the past year the community has become concerned with job security. We have seen an increase in Labor Force due to the addition of new facilities as well as expansions of existing businesses. Our concern however, is with the continuous decline in labor we will see with the closing of Quebecor. With more retail and commercial developments still underway and also new construction beginning, the community will continue to grow in the employment area as well. These additions, along with new road construction projects will increase the commercial and residential building projects, as in the past.

Clearly, livability in the County is enhanced by a vibrant local economy. The overall economic health of a community and its affordability reflect not only livability but also potential for growth.

Simply put education is the cornerstone for success in today's world. Presidents and politicians often use education as a strong asset in many of their campaigns. The reason being education is the key to the success of any nation. High quality public education is essential to community health and livability. Effingham County has a high quality educational system whose results consistently exceed the State of Illinois. Effingham County students scored well above the average Illinois student in Illinois Standards Achievement Test (ISAT) administered in 2000, 2001, 2002 and 2003.

Effingham County Public Schools also measure up well against the State of Illinois in various other leading indicators. For example, the students per teacher ratio for the years 2000, 2001, 2002 and 2003 were below the average state level. Therefore, each student in Effingham County receives more individual attention than the average Illinois student. Effingham County schools also have a higher attendance rate than the average Illinois school. This reflects the fact that the students in the county are in the classroom more than the average Illinois student. These two factors help to contribute to the fact that Effingham County high schools have a much higher graduation rate than the Average Illinois high school in the State of Illinois. However, one area of concern is that the data collected is only for public schools. We found it difficult to obtain information for the private schools and for educational data measuring education for post secondary indicators.

The citizens of Effingham are entitled to a safe environment in which to live, work, play, and raise their children. Effingham Police and Fire Departments, Effingham County Sheriff's Department and Effingham County Fire Protection provide a safe environment for our community. Even with the decrease in crime nationally as well as in Effingham, the threat of being victimized continues to significantly impact Effingham's citizens. Our fear of crime and need for a safe environment guides many of our personal decisions from where to live to which schools our children will attend, as

Neighborhood Watch, and Gang Awareness to name a few. Effingham Fire Dept. is a public department whose members are a combination of paid and volunteer status. The Effingham Fire Protection is made up entirely of volunteers. This combination of partnerships, committed to action is going a long way in making the Effingham community a safer place to live and raise a family. In light of September 11, 2001, the need for "Homeland Security" is becoming an issue even in the smallest of communities. Effingham and Effingham County will continue to meet the challenges of threats, not known until recent times, through enhanced training and continued education of its law enforcement and fire protection officials and an informed citizenry.

Effingham County continues to be a great place to live, work and raise a family. The 2004 Guide for Community Improvement further substantiates the information gathered in the initial study in 2003. For the complete report, visit [www.effinghamchamber.org](http://www.effinghamchamber.org) and click on Effingham County Guide to Community Improvement.

# I. ARTS AND RECREATION

For many residents the availability of cultural and recreational facilities represent the essence of a community's livability. This category provides data on Effingham's support for and access to cultural and recreational activities and facilities.

## INDICATOR #1

Indicator #1

### Visual Arts Venues

**Source:**

The Effingham Convention & Visitors Bureau  
Effingham CVB Visitors Guide

<b>Trends:</b>	<u>1999</u>	<u>2000</u>	<u>2001</u>	<u>2002</u>	<u>2003</u>	<u>2004</u>
	8	8	8	8	8	12

Indicator #2

### Performance Venues

**Source:**

The Effingham Convention & Visitors Bureau

<b>Trends:</b>	<u>1999</u>	<u>2000</u>	<u>2001</u>	<u>2002</u>	<u>2003</u>	<u>2004</u>
	3	3	3	3	3	3

**Explanations:**

Data reflects art galleries, museums and traveling exhibits.  
Indicates Effingham County venues that offer performing arts attractions.

## INDICATOR #3

Indicator #3

### Registered Historical Buildings

**Source:**

National Register of Historic Buildings

Indicator #4

### Number of Historical Sites

**Source:**

The Greater Effingham Chamber of Commerce & Industry

<b>Trends:</b>	<u>1999</u>	<u>2000</u>	<u>2001</u>	<u>2002</u>	<u>2003</u>	<u>2004</u>
	2	2	2	2	2	2

<b>Trends:</b>	<u>1999</u>	<u>2000</u>	<u>2001</u>	<u>2002</u>	<u>2003</u>	<u>2004</u>
	20	20	20	20	20	20

**Explanations:**

Effingham County Courthouse and the Dr. Charles Wright House are registered historic buildings. County residents are fortunate to have a variety of historical sites located throughout the area.

## INDICATOR #5

Indicator #5

### Number of Movie Theaters

**Source:**

The Effingham Chamber of Commerce

**Trends:**     1999   2000   2001   2002   2003   2004  
                    2        2        2        1        2        2

Indicator #6

### Number of Public Golf Courses

**Source:**

The Effingham Chamber of Commerce  
Cardinal Golf Course  
Fore Way Golf Course

**Trends:**     1999   2000   2001   2002   2003   2004  
                    2        2        2        2        2        2

**Explanations:**

Two movie theaters have been located in the county for a number of years up to 2001. The Heart Theatre reopened under new ownership in 2003 showing second run and classic films. The theatre is a classic art-deco style and has historical significance in Effingham.

The county has an 18-hole and a 9-hole public golf course. Memberships at these courses have had significant increases in the past three years, most likely due to the significant remodeling of the courses, with new hole designs and updated facilities.

## INDICATOR #7

Indicator #7

### Number of Fitness Centers

**Source:**

The Greater Effingham Chamber of Commerce & Industry  
 Draves Trim Tone Tan  
 The Zone  
 The Zone II  
 Curves for Women

**Trends:**

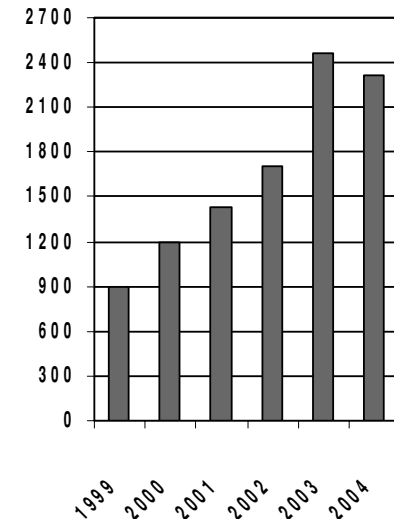
<u>1999</u>	<u>2000</u>	<u>2001</u>	<u>2002</u>	<u>2003</u>	<u>2004</u>
2	2	3	3	4	4

Indicator #8

### Fitness Center Memberships

**Source:**

Draves Trim Tone Tan  
 The Zone I & Zone II  
 Curves for Women



**Trends:**

<u>1999</u>	<u>2000</u>	<u>2001</u>	<u>2002</u>	<u>2003</u>	<u>2004</u>
900	1200	1425	1700	2463	2320

**Explanations:**

Fitness centers offer a wide variety of options for county residents to stay physically fit. Examples of some of the services offered include weights, swimming pools, aerobics, indoor sports, and tanning. Club memberships have grown dramatically in recent years. This is a positive indicator that county residents are focused on their health and lifestyle. There was a slight drop of in fitness center memberships in 2004.

## INDICATOR #9

Indicator #9

### Number of YMCA Members

Source:  
Effingham YMCA

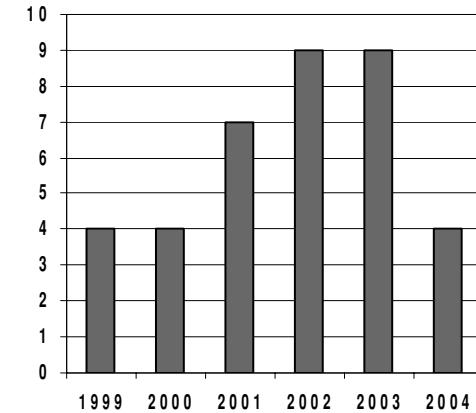


Trends:     1999   2000   2001   2002   2003   2004  
                  523    512    515    566    618    577

Indicator #10

### Number of Adult YMCA Programs

Source:  
Effingham YMCA



Trends:     1999   2000   2001   2002   2003   2004  
                  4        4        7        9        9        4

### Explanations:

YMCA membership has been fairly consistent for the past three years. The YMCA is a great asset to the county and the city of Effingham.

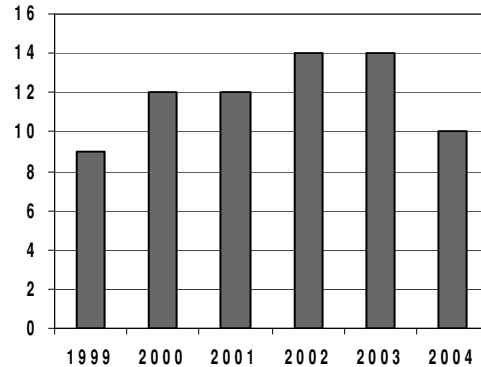
Adult YMCA members have access to various sports activities such as basketball, aerobics, yoga, volleyball, etc.

## INDICATOR #11

Indicator #11

### Number of YMCA Youth Programs

**Source:**  
Effingham YMCA



**Trends:**

1999	2000	2001	2002	2003	2004
9	12	12	14	14	10

Indicator #12

### Number of Recreational Parks / Park Acreage

**Source:**  
Effingham Park District  
Teutopolis Park District  
City of Altamont  
Village of Montrose

Additional parks in Effingham County include Bliss Park in Effingham, Edgewood Park, Beecher City Park, Dieterich Park. Acreage is unknown.

**Trends:**

	1999	2000	2001	2002	2003	2004
No. of Parks	6	6	6	6	13*	13*
Park Acreage	80	80	80	80	170	186

\*Additional county municipalities were included.

### Explanations:

Youth YMCA members also have a wide variety of activities available. Some activities include soccer, t-ball, roller hockey, swimming lessons, and various camps. YMCA membership was fairly consistent from 1999-2003 years but declined slightly in 2004.

Due to the decrease in members, the number of programs decreased as well.

Effingham County has over 186 acres of prime recreational park area. The City of Effingham has six parks with an assortment of facilities available to all. Picnic grounds, baseball fields, miniature golf, basketball courts, and swimming pool offer entertainment for all ages.

## II. CITIZEN PARTICIPATION/INVOLVEMENT

Participation in civic, volunteer and neighborhood endeavors by the residents of a community is a reflection of that community's commitment to improving the quality of life for all its citizens. This category provides information on citizen involvement in various civic community activities.

### INDICATOR #1

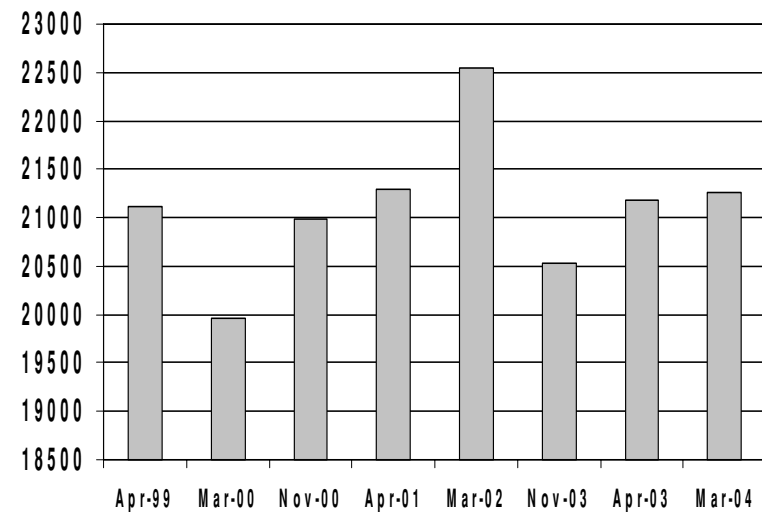
Indicator #1

#### Number of Registered Voters in Effingham County

County population: 34,264

**Source:**

Effingham County Clerk  
 City of Effingham, Community Profile web page:  
[Http://www.effinghamil.com](http://www.effinghamil.com)



Trends:	<u>Apr 1999</u>	<u>Mar 2000</u>	<u>Nov 2000</u>	<u>Apr 2001</u>	<u>Mar 2002</u>	<u>Nov 2002</u>	<u>Apr 2003</u>	<u>March 2004</u>
No. of Reg voters	21,110	19,956	20,986	21,291	22,548	20,532	21,182	21,256

**Explanations:**

Includes all elections since 1999: consolidated election; primary election; state general/governor; presidential/state general.

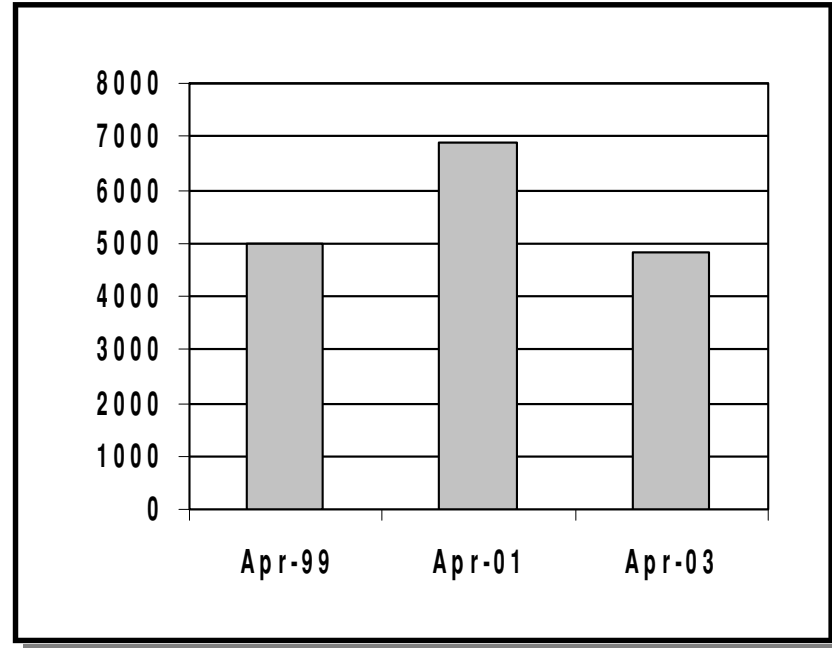
## INDICATOR #2

Indicator #2

### Number of Citizens Who Voted in a School Board Election

**Source:**

Effingham County Clerk



<b>Trends:</b>	<u>April 1999</u>	<u>April 2001</u>	<u>April 2003</u>
No. voting in school board election	4995	6907	4823
Percentage of registered voters voting	23.66%	32.53%	22.77%

**Explanations:**  
 School board elections are held in April every two years.  
 No Updates until April 2005

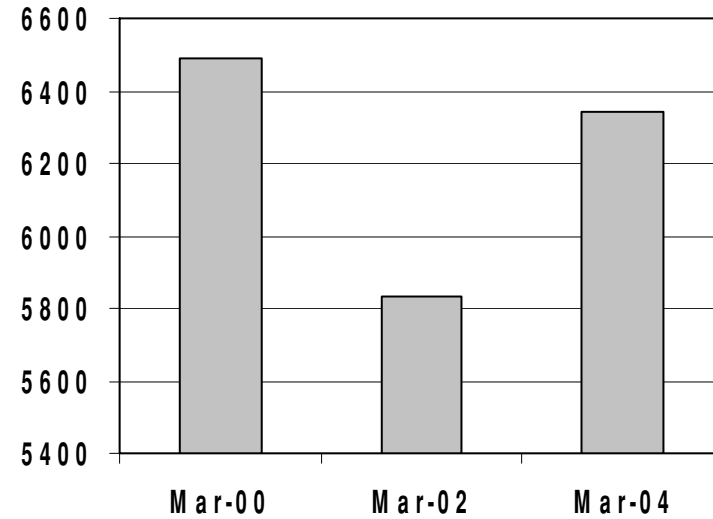
## INDICATOR #3

Indicator #3

### Number of Citizens Who Voted in a Primary Election

**Source:**

Effingham County Clerk



**Trends:**

No. voting in a primary election

March 2000

6492

March 2002

5835

March 2004

6,345

Percentage of registered voters voting

32.53%

25.88%

29.85%

**Explanations:**

March 2000—General and **primary** presidential election

March 2002—Consolidated election, governor and general **primary**

March 2004— Primary election

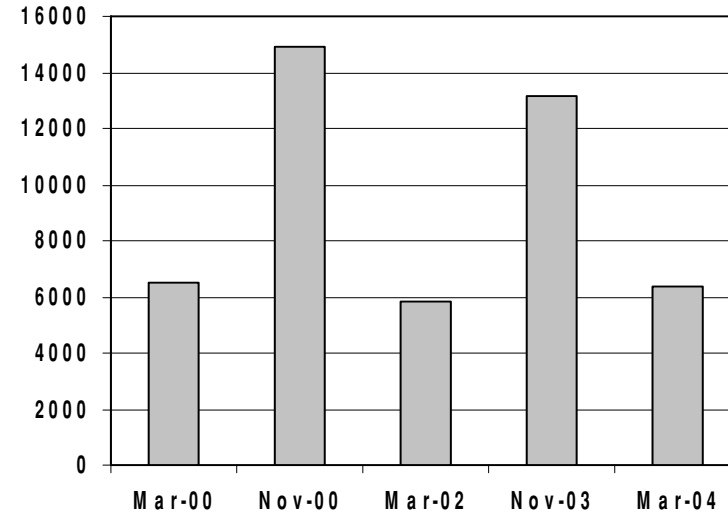
## INDICATOR #4

Indicator #4

### Number of Citizens Who Voted in a General Election

**Source:**

Effingham County Clerk



<b>Trends:</b>	<u>March 2000</u>	<u>Nov 2000</u>	<u>March 2002</u>	<u>Nov 2002</u>	<u>March 2004</u>
No. voting in a general election	6,492	14,918	5,835	13,155	6,345
Percentage of registered voters voting	32.53%	71.08%	25.88%	64.07%	29.45%

**Explanations:**

- March 2000—**General** and primary presidential election
- November 2000—**General** election, presidential election
- March 2002—Consolidated election, governor and **general** primary
- November 2002—General election, gubernatorial election
- March 2004— Primary election
- March 2004— General election

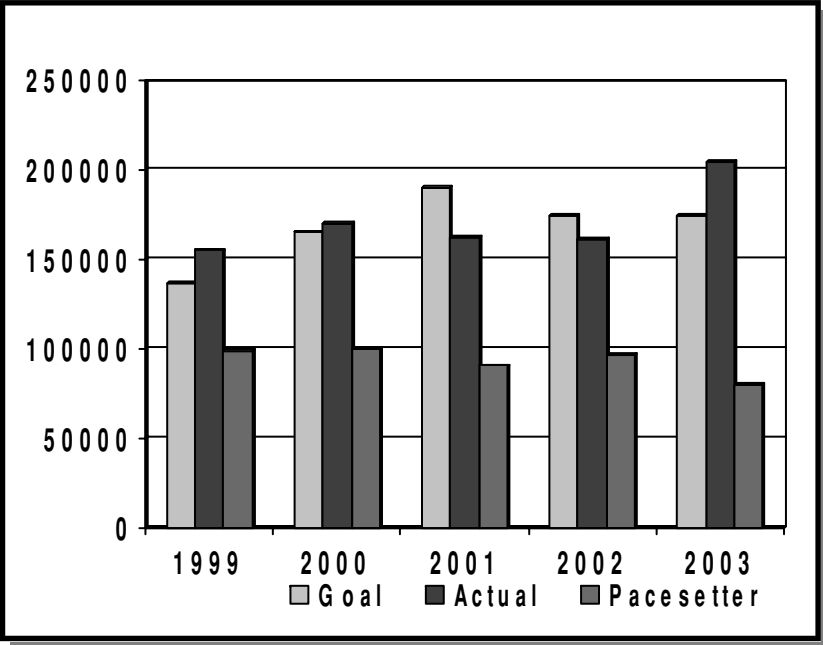
# INDICATOR #5

Indicator #5

## Contributions to United Way

**Source:**

United Way of Effingham County  
 CEFS Literacy Program  
 American Red Cross Effingham County Chapter



<b>Trends:</b>	<u>1999</u>	<u>2000</u>	<u>2001</u>	<u>2002</u>	<u>2003</u>	<u>2004</u>
Campaign Goal	\$136,500	\$165,000	\$190,000	\$175,000	\$175,000	
Actual Amount Raised	\$155,021	\$169,972	\$162,503	\$161,000	\$205,000	
Pacesetter Company Accounts	\$ 98,760	\$100,112	\$ 90,410	\$ 96,600	\$79,656	
Number of Pacesetter Companies				15		

**Explanations:**

The goals of the United Way were exceeded until the year 2001. The 2001 goal was affected by the events of September 11th and the downturn of the economy. These events affected contributions significantly, therefore the goal for 2002 is lower than 2001. The United Way is hopeful that contributions will pick up and things will get back on track in 2003. The Pacesetter companies are recognized as leadership organizations who conduct employee campaigns. They represent about 60% of the total campaign. The number of employees contributing to the United Way is unknown.

## INDICATOR #6

Indicator #6

**Number of Social Service Organizations**

**Source:**  
County Association of Service Providers (C.A.S.P.)

Indicator #7

**Number of Clubs**

**Source:**  
The Greater Effingham Chamber of Commerce

**Trends:**

	<u>1999</u>	<u>2000</u>	<u>2001</u>	<u>2002</u>	<u>2003</u>	<u>2004</u>
	n/a	n/a	n/a	75	79	78

**Trends:**

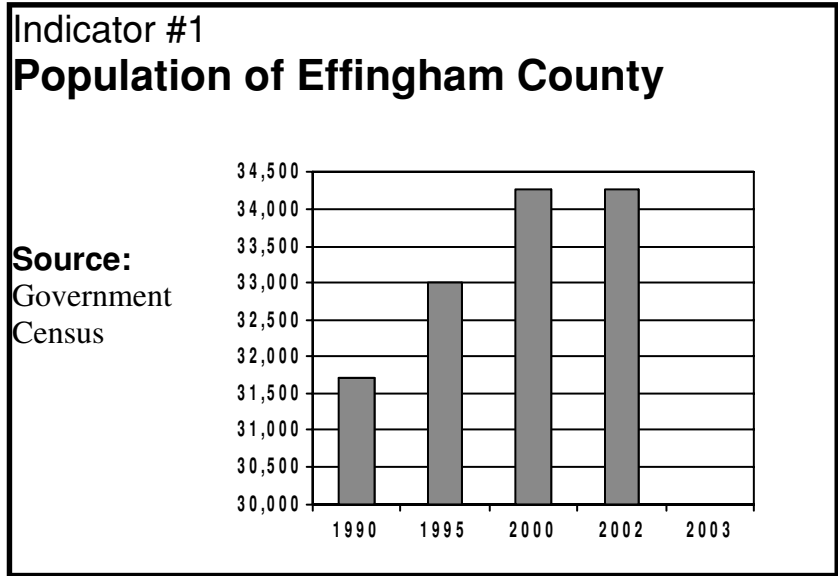
	<u>1999</u>	<u>2000</u>	<u>2001</u>	<u>2002</u>	<u>2003</u>	<u>2004</u>
	n/a	n/a	n/a	61	61	61

**Explanations:**  
 Effingham County is well provided for in the social service and club categories. Only one service was deleted this year as it was found to be a duplication and not financially sound. The need for new services was identified with the addition of 4 new social services organizations.

# III. COMMUNITY WELLNESS

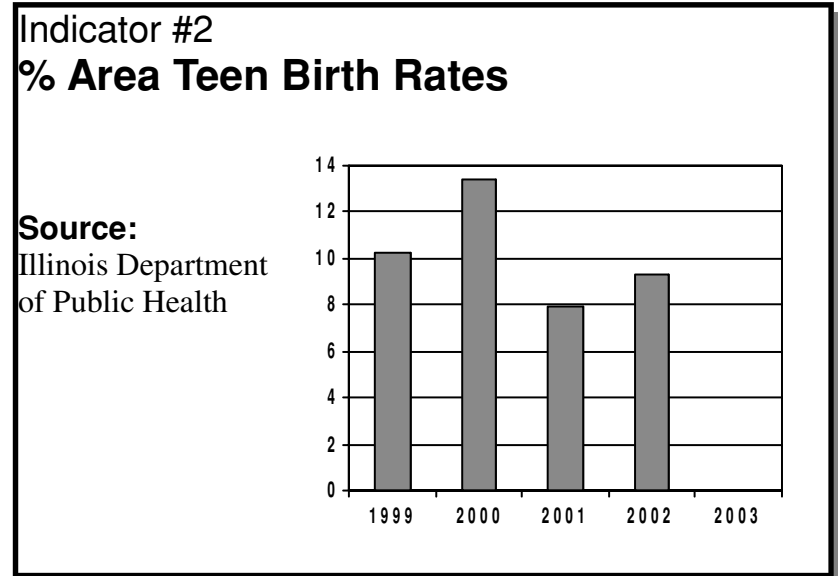
A community demonstrates its livability by committing adequate resources to insuring that all its residents have an opportunity to live healthy and productive lives. This category includes indicators that will identify and recognize areas of need and focus on health care as well as access to social services.

## INDICATOR #1



**Trends:**

	<u>1990</u>	<u>1995</u>	<u>2000</u>	<u>2002</u>	<u>2003</u>
	31,704	33,009	34,264	34,275	n/a



**Trends:**

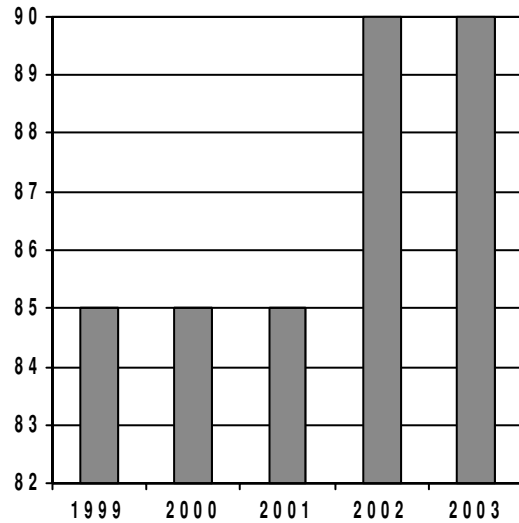
	<u>1999</u>	<u>2000</u>	<u>2001</u>	<u>2002</u>	<u>2003</u>
	10.2%	13.4%	7.9%	9.3%	n/a

**Explanations:**  
From 1990 to 2000, the population has grown approximately 8%. It has slowed over the past 2 years. The percentage of teen births dropped by 41% from 2000 to 2001. There was a slight increase from 2001-2002, but the rate is still below the state average.

## INDICATOR #3

### Indicator #3 % Immunized Children Up to 24 Months

**Source:**  
Effingham County  
Health Department

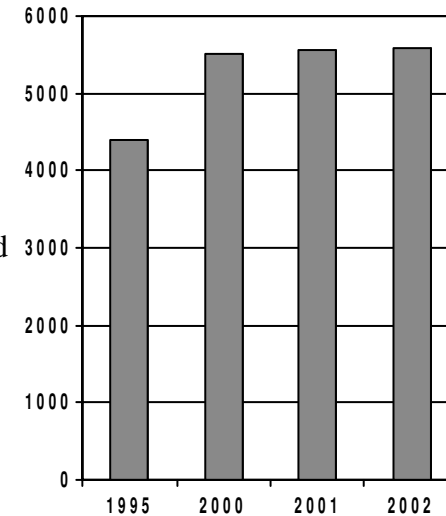


**Trends:**     1999    2000    2001    2002    2003  
                  85        85        85        90        90

### Indicator #4 Medicare Beneficiaries: Elderly & Disabled

**Source:**  
Office of Policy,  
Development,  
Planning and  
Research

Centers for Medicare and  
Medicaid Services



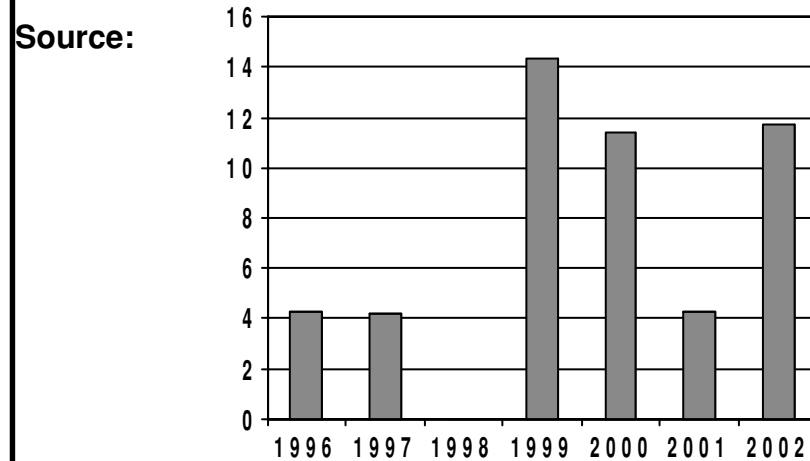
**Trends:**                    1995    2000    2001    2002  
                                  4,388    5,502    5,570    5,594

#### **Explanations:**

According to the statistics in 2002 and 2003, the percentage of immunized children is expected to be higher. The number of Medicare beneficiaries has remained consistent from 2000-2002.

## INDICATOR #5

### Indicator #5 Infant Mortality per 1,000 Live Births



Trends:	<u>1996</u>	<u>1997</u>	<u>1998</u>	<u>1999</u>	<u>2000</u>	<u>2001</u>	<u>2002</u>
	4.3	4.2	0	14.3	11.4	4.3	11.7
	(2/464)	(2/480)	(0/481)	(7/488)	(5/440)	(2/468)	(5/428)

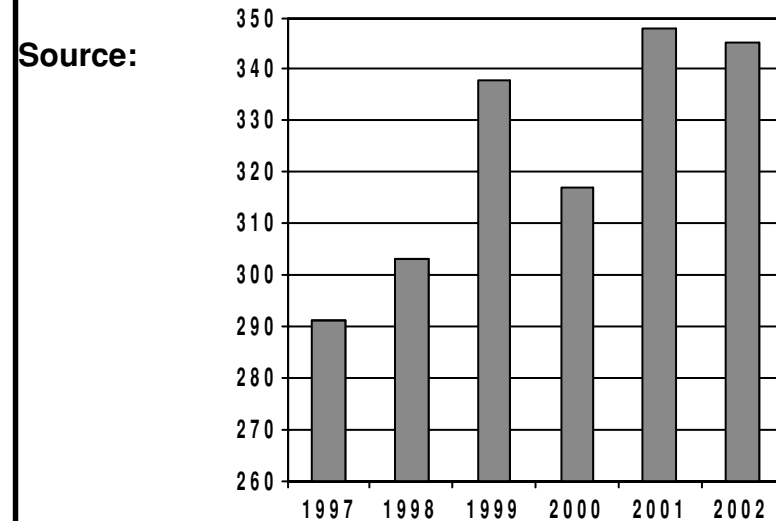
NOTE: Rates based on a small number of events tend to exhibit considerable variation over time because of chance fluctuations.

#### Explanations:

Based on the latest government statistics, the 7 year infant mortality rate is 7.1%. This is below the 7 year infant mortality rate for the state which is 8%.

Based on the latest figures, the death rate rose in 2001, but is not out of line with previous years and when the general growth in population is taken into account

### Indicator #6 Death Rate Total



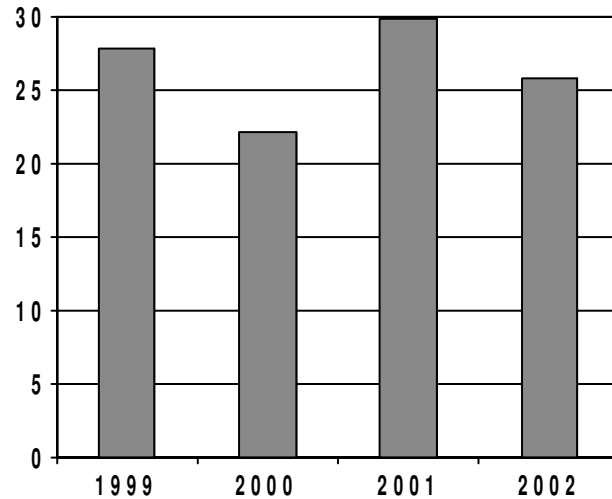
Trends:	<u>1997</u>	<u>1998</u>	<u>1999</u>	<u>2000</u>	<u>2001</u>	<u>2002</u>
	291	303	338	317	348	345

## INDICATOR #7

Indicator #7

**Reported Abuse/Neglect Victims:  
Children % per 1,000**

**Source:**  
DCFS

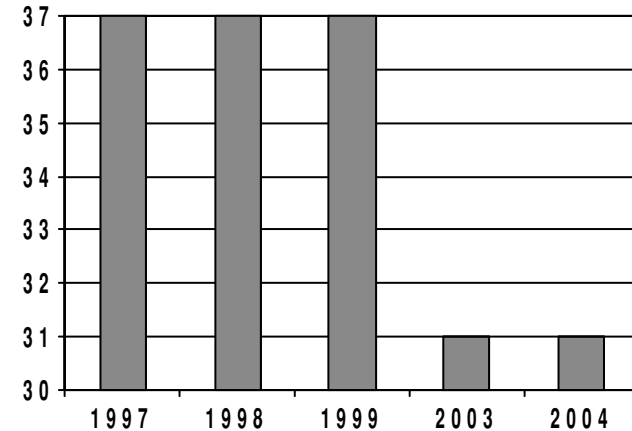


**Trends:**    1999    2000    2001    2002  
                 27.8%    22.2%    29.8%    25.8%

Indicator #8

**Primary Care Physicians**

**Source:**  
Government  
Census  
St. Anthony's  
Memorial  
Hospital



**Trends:**    1997    1998    1999    2003    2004  
                 37    37    37    31\*    31

\* Includes physicians of Family Practice, Internal Medicine, Obstetrics/Gynecology and Pediatrics, per St. Anthony's Memorial Hospital Community Relations.

### Explanations:

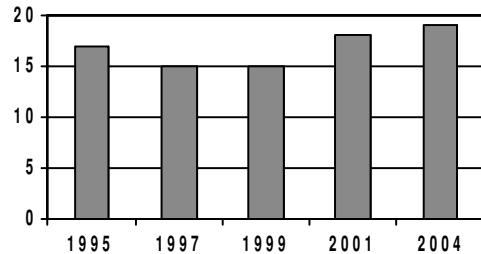
According to the statistics, the reported abused/neglected children have declined.

The Hospital maintains a directory of all physicians affiliated with it. This information was deemed more current and more reliable.

## INDICATOR #9

### Indicator #9 Number of Dentists

Source:  
DCEO



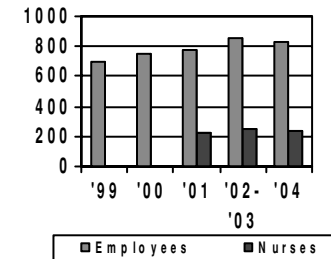
Trends:     1995   1997   1999   2001   2004  
                  17       15       15       18       19

#### Explanations:

There has been a slight increase in the number of dentists in the last two years.

### Indicator #10 Number of Hospital Employees

Source:  
St. Anthony's  
Memorial Hospital



Trends:     1999   2000   2001   2002-03   2004  
                  702       752       774/220   849/245   826/242

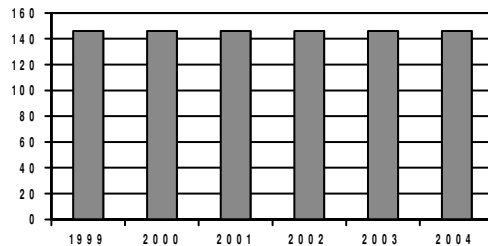
#### Explanations:

Employee rate is increasing greatly to keep up with the demand of the growing community.

## INDICATOR #11

### Indicator #11 Number of Hospital Beds

Source:  
St. Anthony  
Memorial Hospital



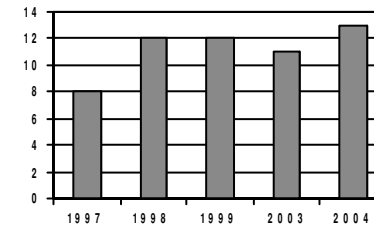
Trends:     1999   2000   2001   2002   2004  
                  146       146       146       146       146

#### Explanations:

Within the last five years the number of beds has not changed.

### Indicator #12 Number of Nursing & Residential Facilities

Source:  
St. Anthony Memorial Hospital,  
Arc, & Heartland Services



Trends:     1997   1998   1999   2003   2004  
                  8       12       12       11       13

#### Explanations:

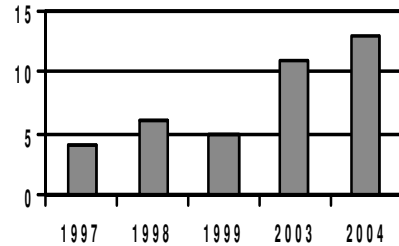
The 2004 information source was the most current available.

### INDICATOR #13

#### Indicator #13 Services for Elderly & Disabled

**Source:**

Government Census  
Senior Service of Effingham  
County



**Trends:**     1997   1998   1999   2003   2004  
                    4        6        5        11      13

**Explanations:**

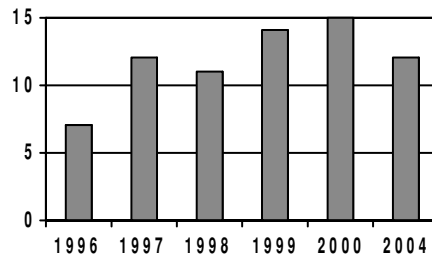
Local source of information deemed more reliable.

### INDICATOR #15

#### Indicator #15 Number of Daycare Facilities

**Source:**

DCFS Government  
Census



**Trends:**     1996   1997   1998   1999   2000   2004  
                    7        12      11      14      15      12\*

**Explanations:**

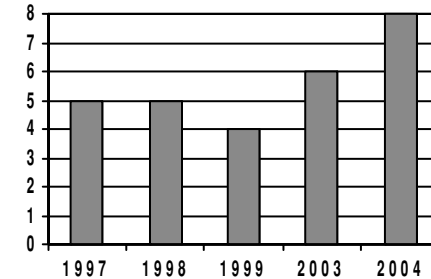
The number of daycare facilities are on a rise due to the increase of population. Does not include 65 licensed family Homes.

### INDICATOR #14

#### Indicator #14 Home Healthcare for Seniors

**Source:**

Government Census  
Effingham County  
Health Dept.  
St. Anthony Hospital



**Trends:**     1997   1998   1999   2003   2004  
                    5        5        4        6        8

**Explanations:**

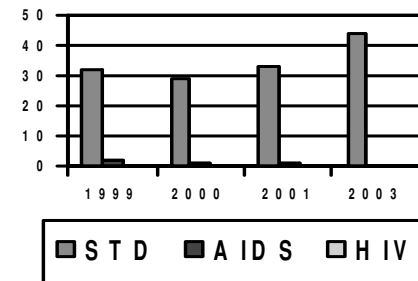
Local source of information deemed more reliable.

### INDICATOR #16

#### Indicator #16 Number of Transmitted Diseases

**Source:**

Effingham County  
Health Department



**Trends:**     1999   2000   2001   2002   2003  
                    32/2/0   29/1/0   33/1/0   N/A   44/0/0

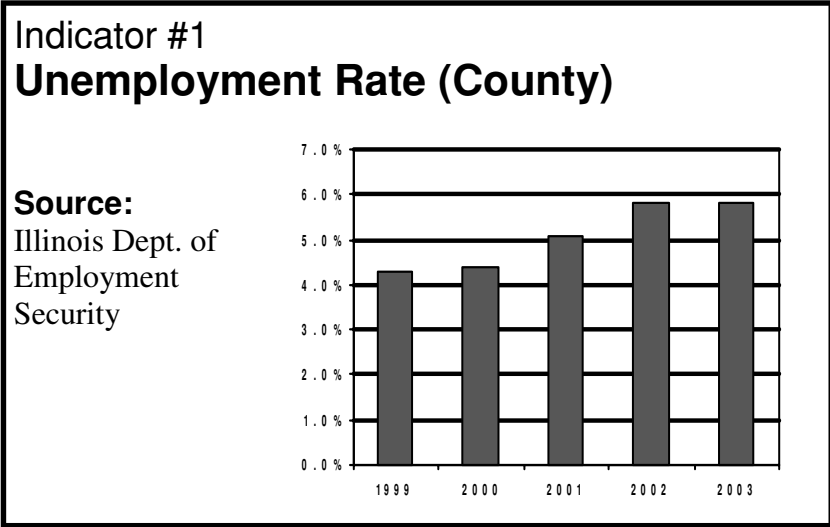
**Explanations:**

Based on the statistics fortunately this is not a major issue. There are no cases of HIV.

# IV. ECONOMIC ENVIRONMENT

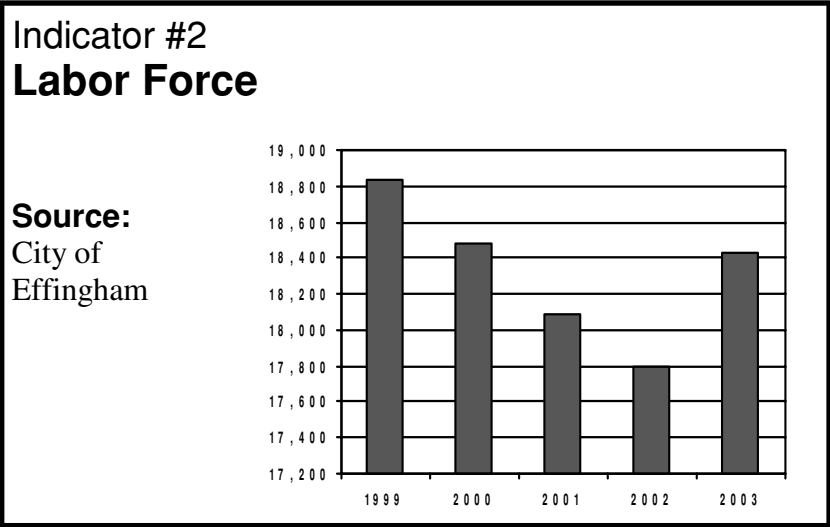
The financial well-being and the degree of economic opportunity present in a community are among the most important indicators of current and future prosperity. This category encompasses a broad range of indicators on the community's fiscal health and its residents' economic status.

## INDICATOR #1



**Trends:**

<u>1999</u>	<u>2000</u>	<u>2001</u>	<u>2002</u>	<u>2003</u>
4.3%	4.4%	5.1%	5.8%	5.8%



**Trends:**

<u>1999</u>	<u>2000</u>	<u>2001</u>	<u>2002</u>	<u>2003</u>
18,830	18,478	18,087	17,800	18,432

**Explanations:**  
The unemployment rate remains steady. This same trend has occurred nationwide during this same time period. The unemployment rate has stayed below state averages.

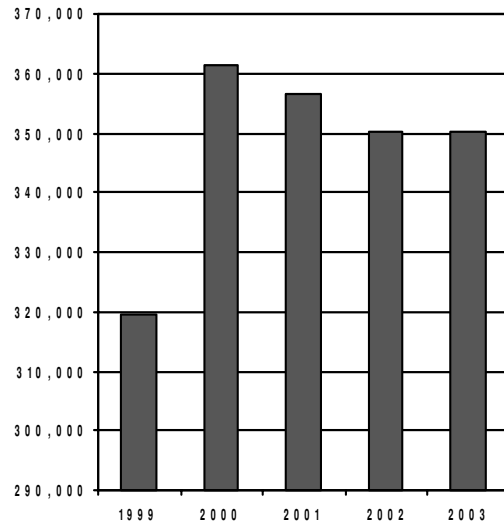
## INDICATOR #3

Indicator #3

### Hotel/Motel Tax Revenues

**Source:**

Effingham County  
Clerk



**Trends:**

Hotel/Motel

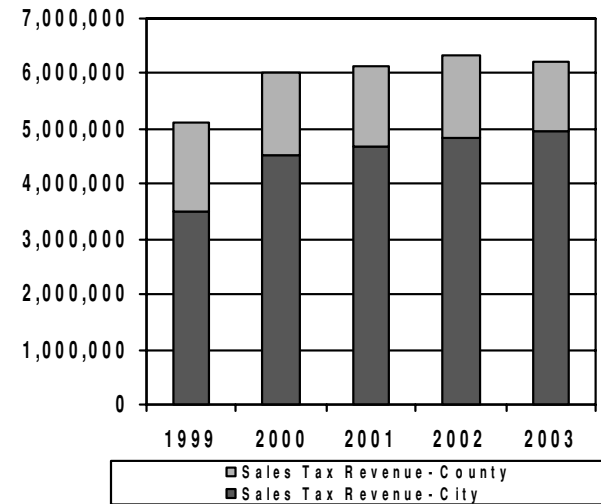
Tax Rev      1999   2000   2001   2002   2003  
                  \$319,635 \$361,497 \$356,634 \$350,005 \$350,289

Indicator #4

### Sales Tax Revenues

**Source:**

Effingham  
County  
Treasurer  
City of  
Effingham



**Trends:**

Rev.(city)   1999   2000   2001   2002   2003  
 Rev.(cnty)   1,631,514   1,495,098   1,472,404   1,506,461   1,266,270  
 Total        \$5,131,624   \$6,031,175   \$6,139,794   \$6,327,650   \$6,205,575

### Explanations:

The hotel/motel tax revenue is only slightly higher from the previous year.

Sales tax revenues continue to increase at the city level however, we see a slight decrease in county sales tax revenue.

## INDICATOR #5

Indicator #5

### Number of Businesses (Mfg & Dist)

**Source:**

City of Effingham

Indicator #6

### Business Employment (Mfg & Dist)

**Source:**

City of Effingham

<b>Trends:</b>	<u>1999</u>	<u>2000</u>	<u>2001</u>	<u>2002</u>	<u>2003</u>
No. of Bus.	83	88	82	86	86

<b>Trends:</b>	<u>1999</u>	<u>2000</u>	<u>2001</u>	<u>2002</u>	<u>2003</u>
1-25 employed	44	46	42	48	48
26-50 employed	11	12	13	10	9
51-75 employed	8	8	7	8	9
76-100 employed	8	4	1	2	2
101-150 empl'd	5	10	10	9	8
151-200 empl'd	0	0	1	2	3
201-300 empl'd	0	0	1	1	2
301-400 empl'd	1	1	1	2	1
401 and up	6	6	6	4	4

**Explanations:**

The number of businesses remained steady in 2003.

## INDICATOR #7

Indicator #7

**Number of people at or below poverty level**

**Source:**

City of Effingham  
Government Census

Indicator #8

**Number of free and reduced price lunches**

**Source:**

School District Offices

<b>Trends:</b>	<u>1998 Census</u>	<u>2000 Census</u>
	3,051	3,891

<b>Trends:</b>	<u>1999</u>	<u>2000</u>	<u>2001</u>	<u>2002</u>	<u>2003</u>
Altamont Unit #10	27.5%	32.6%	27.8%	64.0%*	N/A
Beecher Unit #20	28.0%	32.0%	N/A	N/A	N/A
Dieterich Unit #30	22.8%	25.7%	22.3%	21.0%	N/A
Effingham Unit #40	35.0%	34.3%	27.5%	27.0%	N/A
Teutopolis Unit #50	7.4%	7.3%	6.5%	7.0%	N/A
* includes grade and high school					

**Explanations:**

According to the Regional Office of Education reports are no longer facilitated through their office. Reports are at present time unattainable.

## INDICATOR #9

Indicator #9

### Income

**Source:**

City of Effingham  
Government Census

**Trends:**

Per Capita – County  
Per Capita – City  
Median – County  
Median – City

**2000 Census**

\$18,301  
\$19,132  
\$39,379  
\$34,761

Indicator #10

### Number of building permits issued

**Source:**

Effingham City Building Official

**Trends:**

	<u>1999</u>	<u>2000</u>	<u>2001</u>	<u>2002</u>	<u>2003</u>
Residential	125	117	107	113	105
Commercial	<u>115</u>	<u>102</u>	<u>78</u>	<u>81</u>	<u>75</u>
Total	240	219	185	194	180

**Explanations:**

The number of building permits is for the City of Effingham only. The number of building permits fell once again after an increase in 2002.

A lot of new housing is being developed outside the city limits. Hopefully this trend can be reversed with a stronger economy.

## INDICATOR #11

Indicator #11

### Median cost of single family home

**Source:**

Effingham Realtors

<b>Trends:</b>	<u>1999</u>	<u>2000</u>	<u>2001</u>	<u>2002</u>	<u>2003</u>
Median Cost	\$105,000	\$106,500	\$107,500	\$108,000	\$108,000

Indicator #12

### Average monthly apartment rent

**Source:**

Effingham Realtors

<b>Trends:</b>	<u>1999</u>	<u>2000</u>	<u>2001</u>	<u>2002</u>	<u>2003</u>
Avg. Mo. Apt. Rent	350	360	375	400	425

**Explanations:**

These numbers are an average base on information from local realtors.  
Housing cost remain a strong point for Effingham County.

## INDICATOR #13

Indicator #13

### Annual Real Estate Tax Bill

**Source:**

Effingham County Assessor

<b>Trends:</b>	<u>1999</u>	<u>2000</u>	<u>2001</u>	<u>2002</u>
\$60,000 home	\$1,123	\$1,140	\$1,124	\$1,149
\$120,000 home	\$2,484	\$2,523	\$2,486	\$2,543
\$200,000 home	\$4,299	\$4,366	\$4,302	\$4,400

Indicator #14

### Monthly Bills

**Electric** – based on average usage of 950 Kwh/month

**Gas** – based on average usage of 55 therms/mo

**Sewer/Water** – based on 5,000 gal/mo

**Source:**

Effingham Water Department  
Ameren CIPS

<b>Trends:</b>	<u>1999</u>	<u>2000</u>	<u>2001</u>	<u>2002</u>	<u>2003</u>
Electric Bill	80	80	80	83	80
Gas Bill	32	35	50	55	54
Sewer/Water	24	25	28	30	31

**Explanations:**

The annual real estate tax bill is based on Douglas Township tax code 3008. Owner occupied. Under 65.  
The electric and sewer/water rates for Effingham County have remained fairly constant.  
The gas rates remain stable from 2002.

## V. EDUCATION

High quality public education is essential to community health and livability. This category offers data on area education (K-12) and higher education resources, attendance and quality.

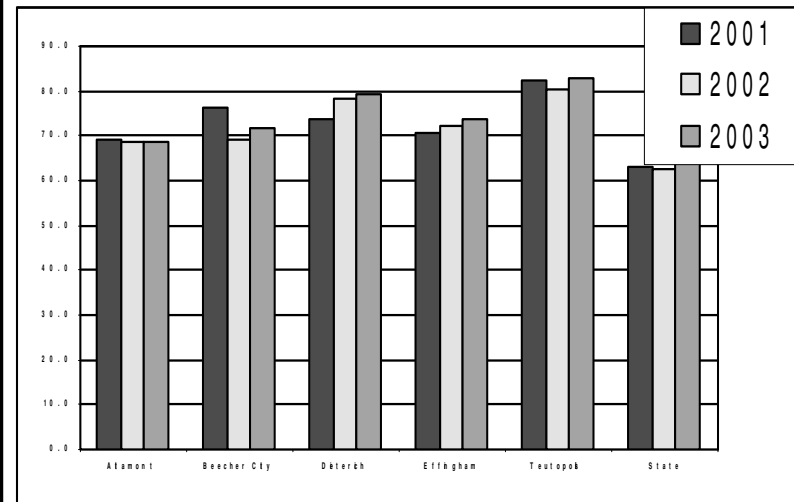
### INDICATOR #1

#### Indicator #1 Standard Testing Results, Public versus State

**Source:**

2001, 2002, 2003 Illinois School Report Card

<b>Trends:</b>	<u>2001</u>	<u>2002</u>	<u>2003</u>
Altamont	68.9	68.6	68.4
Beecher City	76.1	69.1	71.6
Dieterich	73.6	78.4	79.3
Effingham	70.9	72.0	73.8
Teutopolis	82.5	80.2	82.7
State	63.1	62.7	63.9



**Explanations:**

The data reflects the average percent of students meeting or exceeding the Illinois Learning Standards as reflected for the grades and subjects tested on the ISATs (Illinois Standards Achievement Test)..

In each district the percentage of students meeting or exceeding the Illinois Learning Standards exceeded the average for all students in the State of Illinois.

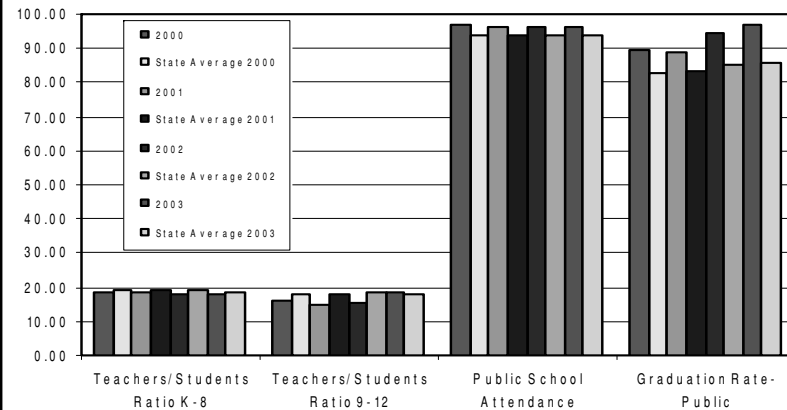
## INDICATOR #2

Indicator #2

### Student/Teacher Ratio, Attendance, and Graduation Rates

**Source:**

2000-2003 Illinois School Report Card



Trends:	<u>Tea/Stu Ratio K-8</u>	<u>Tea/Stu Ratio 9-12</u>	<u>Publ Sch Attend K-6</u>	<u>Grad Rate</u>
2000	18.38	16.00	97.00	89.34
2000 St. Av	19.30	18.10	93.90	82.60
2001	18.62	15.04	96.58	89.12
2001 St. Av	19.10	18.00	93.70	83.20
2002	18.08	15.54	96.20	94.38
2002 St. Av	19.10	18.30	94.00	85.20
2003	17.60	18.60	96.40	96.90
2003 St. Av	18.40	18.20	94.00	86.00

**Explanations:**

The chart illustrates the overall average of all public schools within Effingham County comparative to average results for the entire State of Illinois.

The graduation rate is calculated by comparing the number of 1999-00 graduates for 2000, 2000-01 graduates for 2001, and 2001-02 graduates for 2002 with the number of students enrolled in ninth grade in the fall of 1996 for 2000 graduation date, 1997 for 2001 graduation date and 1998 for 2002 graduation dates. Adjustments have been made for students who transferred into and out of the school in the last four years.

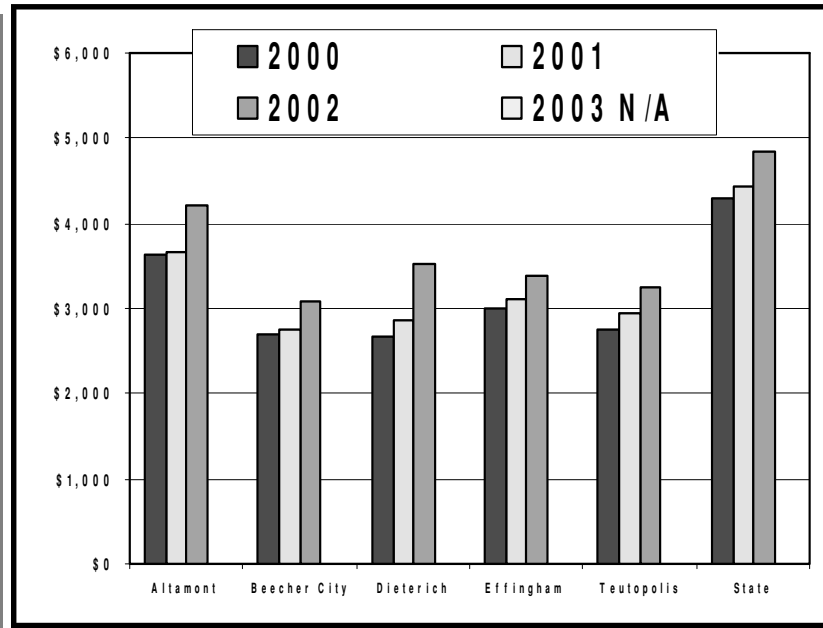
## INDICATOR #3

Indicator #3

### Instructional Expenditures per Student versus State Spending

**Source:**

2001-2003 Illinois School Report Card



<b>Trends:</b>	<b>2000</b>	<b>2001</b>	<b>2002</b>	<b>2003 N/A</b>
Altamont	\$3,627	\$3,667	\$4,207	
Beecher City	\$2,694	\$2,744	\$3,096	
Dieterich	\$2,668	\$2,860	\$3,525	
Effingham	\$3,006	\$3,101	\$3,375	
Teutopolis	\$2,765	\$2,937	\$3,246	
State	\$4,291	\$4,425	\$4,842	

#### **Explanations:**

The chart illustrates the amount of money spent for instruction per student in each of the five school districts versus the average spent per student in the State of Illinois.

In each of the five districts the amount of money spent per student for instruction continues to increase.

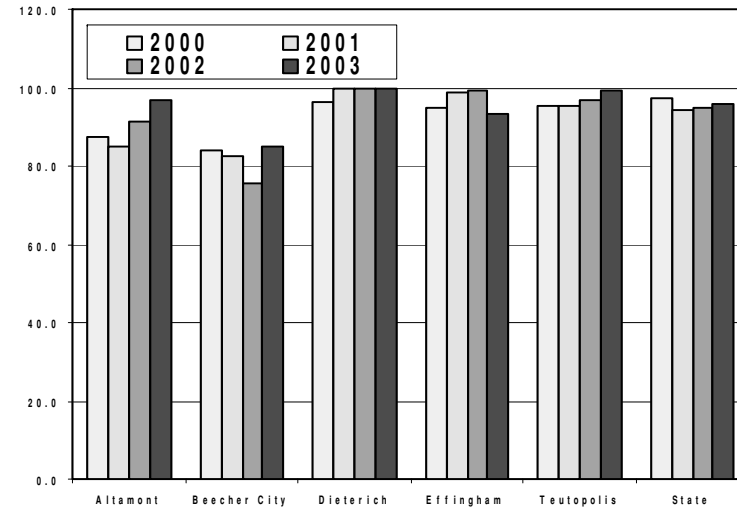
## INDICATOR #4

Indicator #4

### Parental Contacts per District versus State

**Source:**

2000-2003 Illinois School Report Card



**Trends:**

	<u>2000</u>	<u>2001</u>	<u>2002</u>	<u>2003</u>
Altamont	87.2	85.1	91.6	97.0
Beecher City	84.0	82.4	75.7	85.0
Dieterich	96.1	100.0	100.0	100.0
Effingham	94.6	98.7	99.1	93.1
Teutopolis	95.1	95.4	96.7	99.2
State	97.2	94.5	95.0	95.9

**Explanations:**

Parental contact includes parent-teacher conferences, parental visits to school, school visits to home, telephone conversations, and written correspondence. A high percentage of parental contact is important in maintaining communication and allowing parents/guardians to become more involved in the emphasis of education on area students.

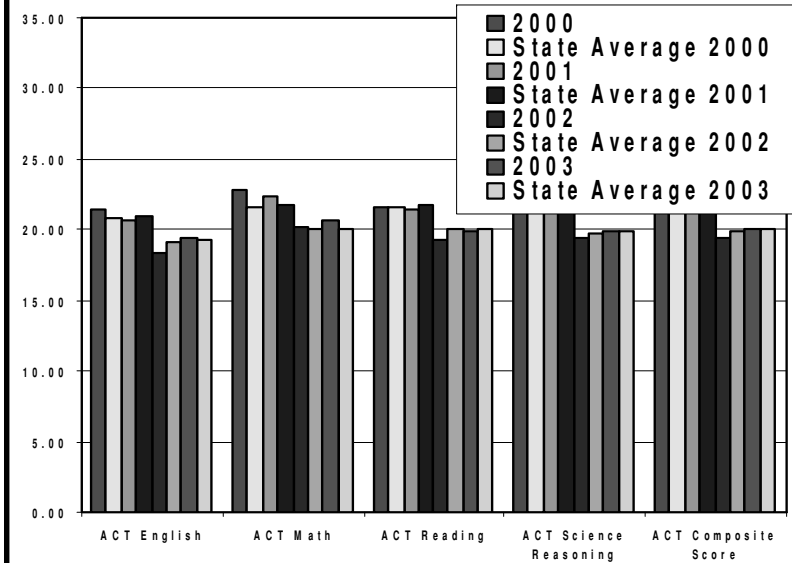
## INDICATOR #5

### Indicator #5

### ACT Testing Results for Effingham County Public Schools versus Average Results for the State of Illinois

**Source:**

2000-2003 Illinois School Report Cards



<b>Trends:</b>	<b><u>ACT English</u></b>	<b><u>ACT Math</u></b>	<b><u>ACT Reading</u></b>	<b><u>ACT Science</u></b>	<b><u>ACT Composite Score</u></b>
2000	21.40	22.76	21.64	21.60	22.00
State Avg	20.80	21.60	21.60	21.50	21.50
2001	20.70	22.40	21.40	21.74	21.70
State Avg	21.00	21.70	21.80	21.70	21.70
2002	18.42	20.22	19.24	19.42	19.44
State Avg	19.10	20.10	20.00	19.80	19.90
2003	19.40	20.60	19.90	19.90	20.10
State Avg	19.30	20.10	20.10	19.90	20.00

**Explanations:**

The ACT is used by many colleges and universities to evaluate students' preparation for higher education. ACT scores range from 1 (lowest) to 36 (highest). State averages for ACT data are based on regular public schools and do not include private and special purpose schools.

## VI. PUBLIC ORDER AND SAFETY

The category of public order and safety relates to law enforcement, fire protection, and rescue services. The major concerns of any community should be the personal safety of its citizens.

### INDICATOR #1

Indicator #1

#### Staffed Law Enforcement and Firemen

**Source:**

Effingham City Police Dept.  
 Effingham Fire Dept.  
 Effingham County Volunteer Fire Protection  
 Watson                                      Teutopolis  
 Shumway/Lake Sara                      Dieterich  
 Altamont                                      Montrose  
 Edgewood/Mason  
 Beecher City

Indicator was expanded from City of Effingham statistics to include all of Effingham County. There are 8 Volunteer Fire Departments in Effingham County which have a combined total of 248 volunteers. These individuals provide fire protection coverage for the communities within Effingham County and provide assistance outside of their communities when needed.

**Trends:**

	<u>2002</u>	<u>2003</u>
Sheriff, Full time	44	47
Sheriff, Part time	22	22
Police, city	25	25
Firemen-Full time	16	15
Firemen-Part time	30	32
Firemen-Volunteers	242	248

**Explanations:**

The Fire Department currently has an ISO rating of 4.  
 Average ISO rating for other county fire departments is 7.  
 The average Police, Fire and Medic Response time is 3-4 minutes within the city of Effingham..  
 Effingham Fire Dept. has a unique combination of paid and volunteer members.  
 Effingham County Fire Protection has all volunteer members.

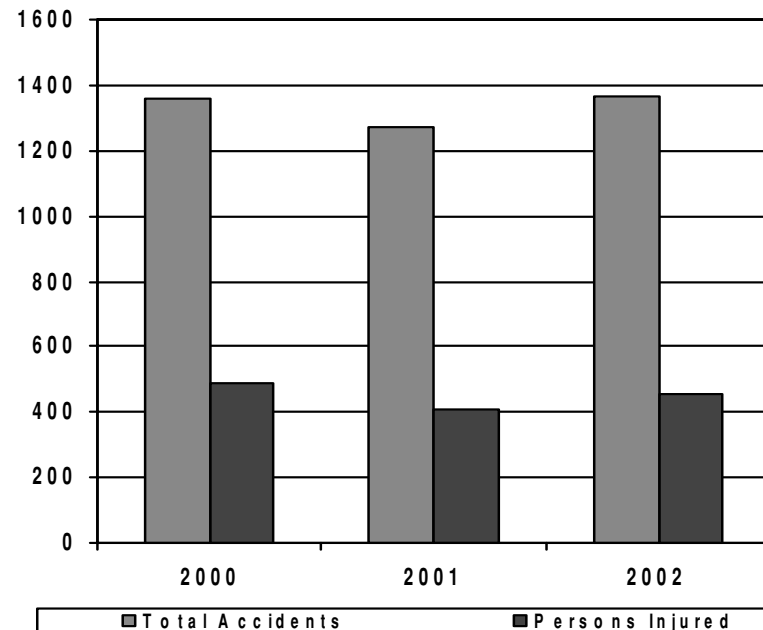
## INDICATOR #2

Indicator #2

### Deaths Related to Motor Vehicles as Compared to Total Accidents, Injury Accidents and Persons Injured.

**Source:**

[www.isp.state.il.us](http://www.isp.state.il.us)  
[www.dot.state.il.us](http://www.dot.state.il.us)



<b>Trends:</b>	<u>2000</u>	<u>2001</u>	<u>2002</u>	<u>2003</u>
Total Accidents	1360	1272	1365	N/A
Injury Accidents	N/A	N/A	N/A	N/A
Persons Injured	489	407	456	N/A
Fatalities	11	12	11	N/A

**Explanations:**

Research was expanded from City of Effingham statistics to Effingham County statistics.

In 2000 there were 11 fatalities; 4 (36%) were alcohol related.

In 2001 there were 12 fatalities; 5 (42%) were alcohol related.

No figures available for percentage of alcohol related deaths in 2002.

No figures were available for 2003 on the websites listed above and were unavailable from the Effingham County Sheriff's Office.

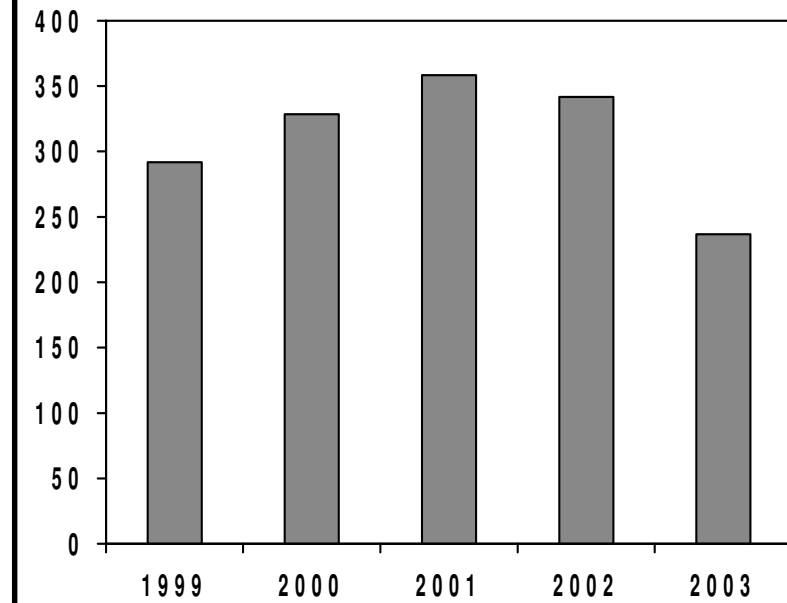
### INDICATOR #3

Indicator #3

#### Annual Fire Calls

**Source:**

Effingham Fire Dept.  
 Effingham County Fire Protection From:  
 Watson  
 Shumway/Lake Sara  
 Teutopolis  
 Altamont  
 Edgewood/Mason  
 Dieterich  
 Beecher City  
 Montrose



**Trends:**

	<u>1999</u>	<u>2000</u>	<u>2001</u>	<u>2002</u>	<u>2003</u>
Annual Fire Calls-City	291	328	358	341	238
Annual Fire Calls-County				263	274

**Explanations:**

Research was expanded from City of Effingham Fire Dept. only to include all Fire Protection in Effingham County. Effingham (city) Fire Department provides the following services: Fire, Search and Rescue, Hazmat and Extrication. Fire Stations #1, #2, and #3 protects 12,000 people in an area of 7 square miles.

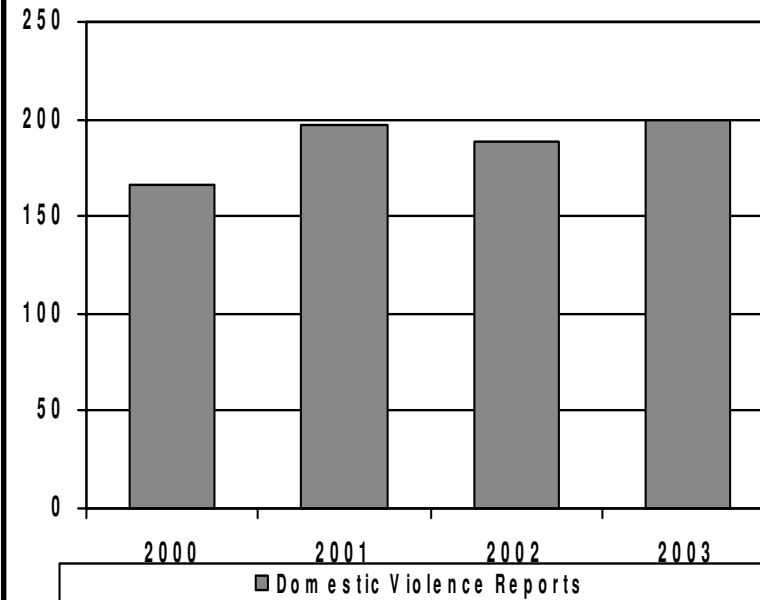
## INDICATOR #4

Indicator #4

### Domestic Violence Reports as Compared to Domestic Violence Arrests.

**Source:**

Effingham County Sheriff's Dept..



**Trends:**

Domestic Violence Reports  
Domestic Violence Arrests

2000    2001    2002    2003

166    197    188    200  
Not available from Sheriff's Dept.

**Explanations:**

Effingham County Sheriff's Dept. report is for all domestic violence.

Arrest rate for domestic complaints was not available from the Effingham County Sheriff's Dept.

Reports of domestic problems rose 6% in 2003.

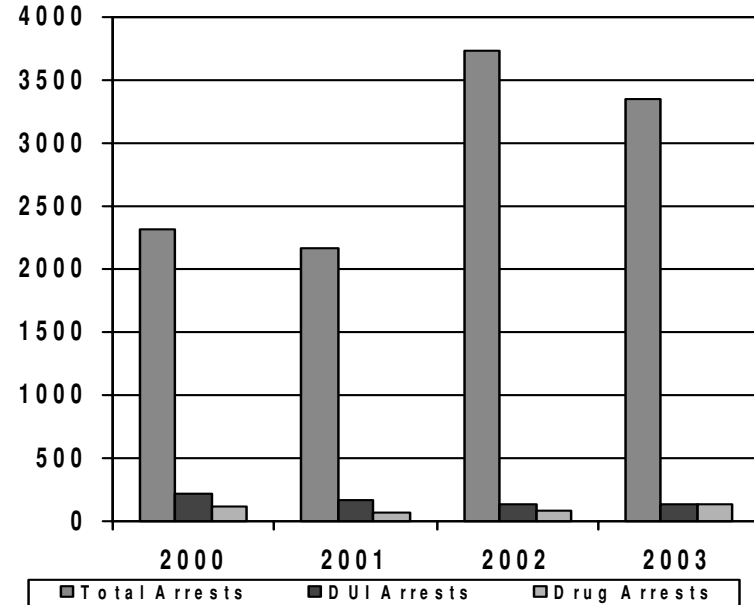
## INDICATOR #5

Indicator #5

### Total Arrests as Compared to DUI Arrests and Drug Arrests.

**Source:**

Effingham County Sheriff's Dept.



**Trends:**

	<u>2000</u>	<u>2001</u>	<u>2002</u>	<u>2003</u>
Total Arrests	2319	2175	3729	3353
DUI Arrests	214	163	139	137
Drug Arrests	112	64	87	130

**Explanations**

Research was expanded from Effingham City to cover Effingham County.  
 Total Arrests have decreased approx. 10% since 2002.  
 DUI Arrests have remained steady. They averaged 6.3% of total arrests..  
 Drug Arrests have continued to rise since 2001.

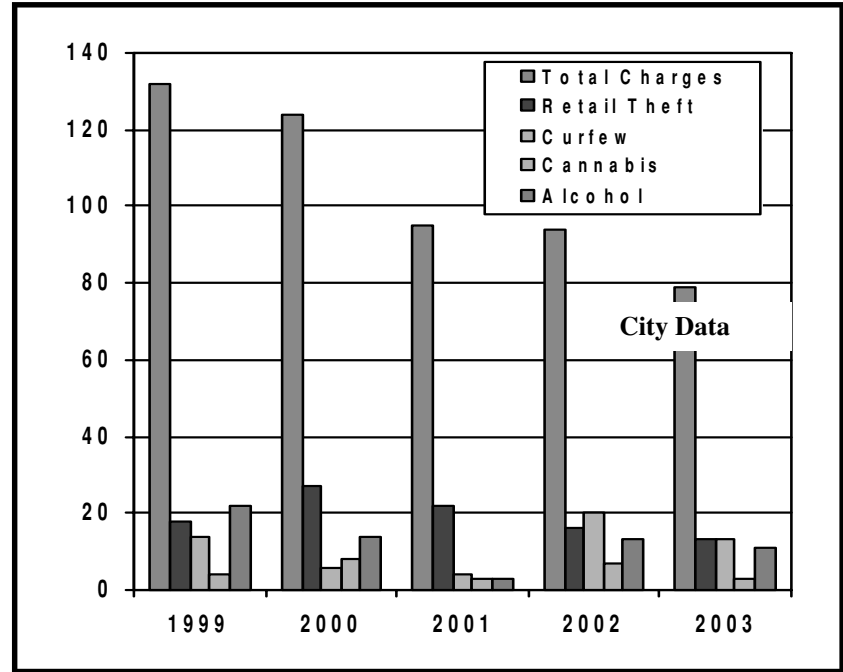
## INDICATOR #6

### Indicator #6

### Juvenile Delinquency Charges

**Source:**

Effingham County Sheriff's Dept.  
 Effingham County States Attorney  
 Effingham City Police Dept.



**Trends: (city data)** 1999 2000 2001 2002 2003

Total Charges	132	124	95	94	79
Retail Theft	18	27	22	16	13
Curfew	14	6	4	20	13
Cannabis	4	8	3	7	3
Alcohol	22	14	3	13	11

Research was expanded from City of Effingham to Effingham County. Effingham County Sheriff's Dept. was unable to provide any information and referred us to the Effingham County States Attorney's office. They were also unable to provide statistics involving juveniles. Figures shown are City of Effingham data.

**Explanations: (2003)**

Total Delinquency Charges has continued to decline.  
 Retail Theft has declined from the previous year.  
 Cannabis and Alcohol related charges have remained lower in 2003.

# **SUMMARY AND CONCLUSIONS**

## **Immediate Attention**

### **Arts & Recreation**

None at this time.

### **Citizen Participation/Involvement**

None at this time.

### **Community Wellness**

The increase in sexually transmitted diseases from 2001 to 2003, albeit small, should be monitored to avoid a long-term problem.

### **Economic Environment**

The unemployment rate has gradually increased over the past 4 years. While this follows the general overall economic trends, it is an issue to be closely watched.

### **Education**

None at this time.

### **Public Order and Safety**

None at this time.

# **SUMMARY AND CONCLUSIONS**

## **To Be Watched**

### **Arts & Recreation**

Fitness Center membership, YMCA memberships and programs decreased is most likely related to the overall economic environment in the area.

### **Citizen Participation/Involvement**

Citizens need to be aware that their vote does matter and they need to exercise that right. The number of citizens who voted in the most recent School Board Election and the General Election was slightly down from the previous. We need to do more campaigning and the importance of getting out and voting in any election by doing a calling campaign and offering to drive our family, friends and neighbors to the poll.

### **Community Wellness**

The number of teenage births in Effingham County fluctuated between 1999 and 2002. Although the increase from 2001 to 2002 was slight, it needs to be watched very closely. In addition to family communication, our schools need to continue to play a key role in reducing teenage pregnancy. The Department of Human Services supports several programs aimed at helping schools and community partners address this issue. After a 3-year decline, the Effingham County infant mortality rate increased again in 2002. This needs to be addressed to avoid an increasing trend. Promoting early and continuous prenatal care and providing outreach and educational programs are ways that we, as a community, can help reduce the risks factors. The U. S. Department of Health and Human Services supports a wide range of programs designed to prevent

### **Economic Environment**

The increase in labor force for the City is a definite positive light. This comes because of the addition Ameren Energy, Krispy Kreme, Menards, and several other existing businesses in the area who have expanded their current operations. What will need to be watched is the continuous loss in labor force we are beginning to lose as a result of the Quebecor closing.

### **Education**

None at this time

### **Public Order and Safety**

The increase number of drug arrests should be viewed as a positive sign that drug related offenders are being caught. Hopefully this will lead to a safer environment for all residents. Domestic Violence reports rose 6% in the past year. This again may be a sign that more are willing to step forward to resolve the problem however, a continuous rise in domestic violence is something that we need to put on our "citizens awareness" list.

# REFERENCES

## Arts & Recreation

The Greater Effingham Chamber of Commerce & Industry  
City of Effingham website  
Effingham Convention & Visitors Bureau  
National Register of Historic Buildings  
Cardinal Golf Course  
Fore Way Golf Course  
Draves Trim Tone Tan  
The Zone  
The Zone II  
Curves for Women  
Effingham YMCA  
Effingham Park District  
Teutopolis Park District  
City of Altamont  
Village of Montrose

## Citizen Participation/Involvement

Effingham County Clerk  
United Way of Effingham County  
County Association of Service Providers  
CEFS Literacy Program  
American Red Cross Effingham County Chapter  
The Greater Effingham Chamber of Commerce  
City of Effingham website

## Community Wellness

Government Census  
Effingham County Health Department  
Office of Policy, Development, Planning and Research  
[www.IDPH.state.il.us](http://www.IDPH.state.il.us)  
Department of Children & Family Services (DCFS)  
St. Anthony's Memorial Hospital  
DCEO

## Economic Environment

City of Effingham  
Government Census  
Effingham County Treasurer  
School District Offices  
Effingham City Building Official  
Effingham County Assessor  
Effingham Realtors  
Effingham Water Department  
Ameren CIPS

## Education

2000, 2001, 2002 and 2003 Illinois School Report Card

## Public Order and Safety

Effingham City Police Department  
Effingham Fire Department  
Effingham County Fire Protection Districts  
[www.isp.state.il.us](http://www.isp.state.il.us)  
[www.dot.state.il.us](http://www.dot.state.il.us)  
Effingham County Sheriff's Department  
Effingham County State's Attorney's Office

## LEAD Class of 2004

**Chad Armstrong**

Project Manager/Estimator  
AKRA Builders, Inc.

**Becky Barnes**

Administrative Assistant  
The Wolters Family Interests

**Tracy Berberich**

Attorney  
Taylor Law Offices, P.C.

**Karen Cheatum**

Director  
Effingham Convention & Visitors Bureau

**Celia Ebbert**

Section Specialist  
St. Anthony's Memorial Hospital

**Steve Estes**

Industrial Engineer  
Ameren CIPS

**Debbie Fergus**

Executive Secretary  
St. Anthony's Memorial Hospital

**Nathan Gannaway**

Manufacturing Engineer  
HN Automotive, Inc.

**Ann Hunt**

Senior Manager—Fraud Center  
Consolidated Communications

**Gayla Kuhns**

Staff Accountant  
St. Anthony's Memorial Hospital

**Sean Morris**

Produce Manager  
Martin's IGA

**Greg Perry**

Vice President  
Crossroads Bank

**Marv Phillips**

Effingham Manager  
Cromwell Radio Group

**Sarah Robins**

Marketing Coordinator  
Agracel, Inc.

**Rick Roberson**

Controller  
McHugh Hospitality Group, Inc.

**Courtney Ruffner**

Pharmacy Technician  
Martin's IGA

**Dee Schmitz**

Business Office Supervisor  
St. Anthony's Memorial Hospital

**Chris Sefton**

Catering Coordinator  
Martin's IGA

**Bev Soltwedel**

Retail Sales Lender  
Effingham State Bank